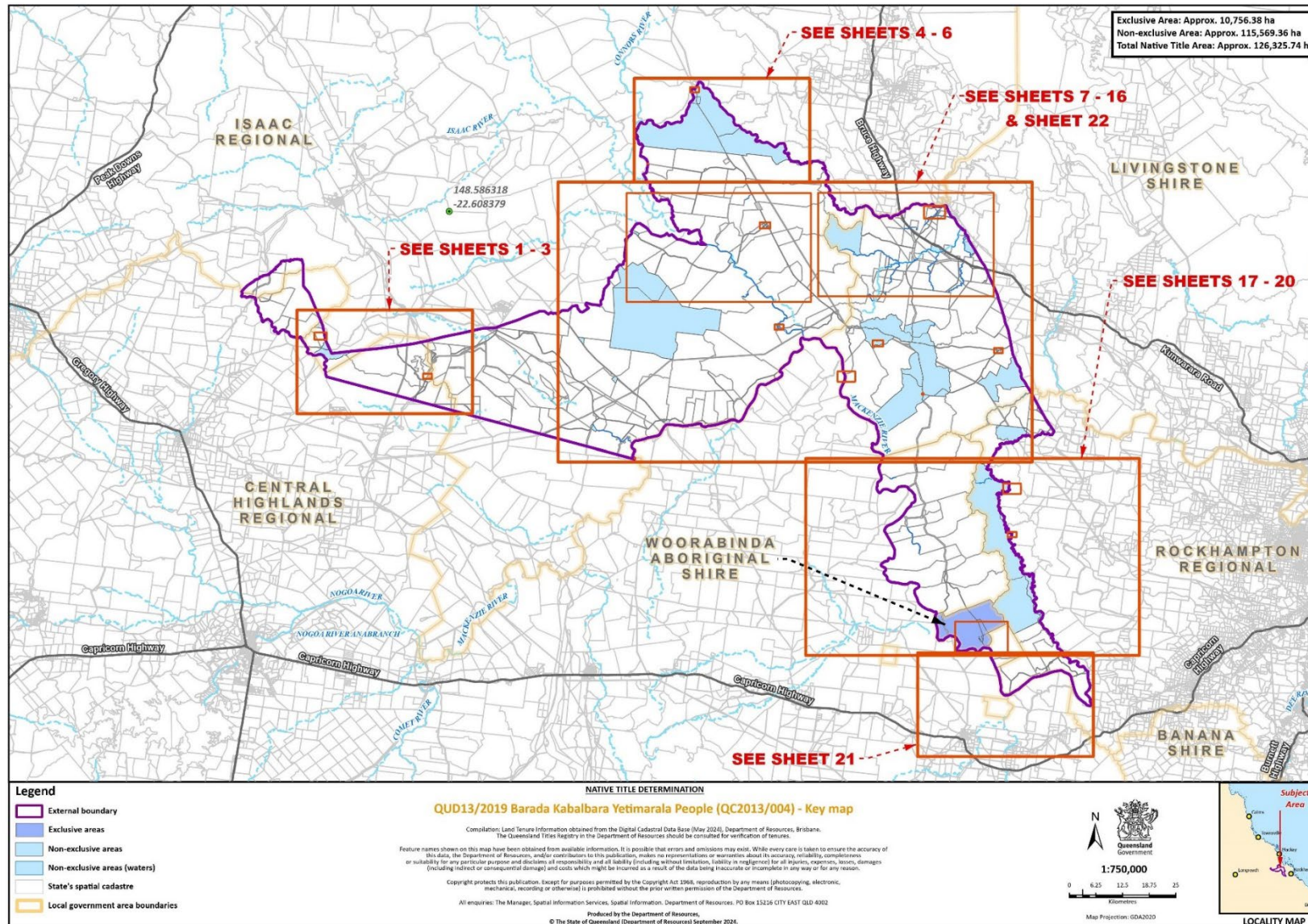
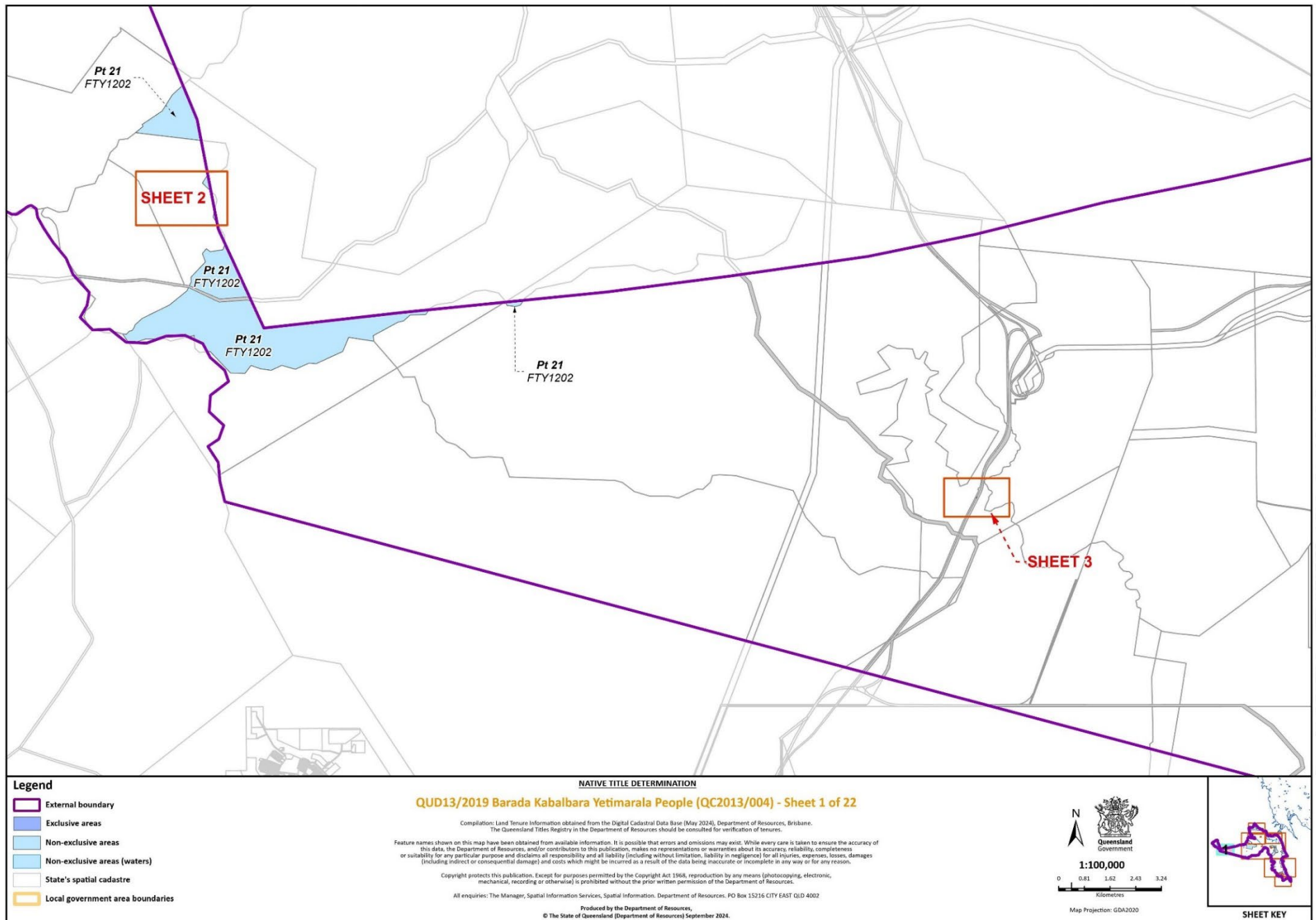
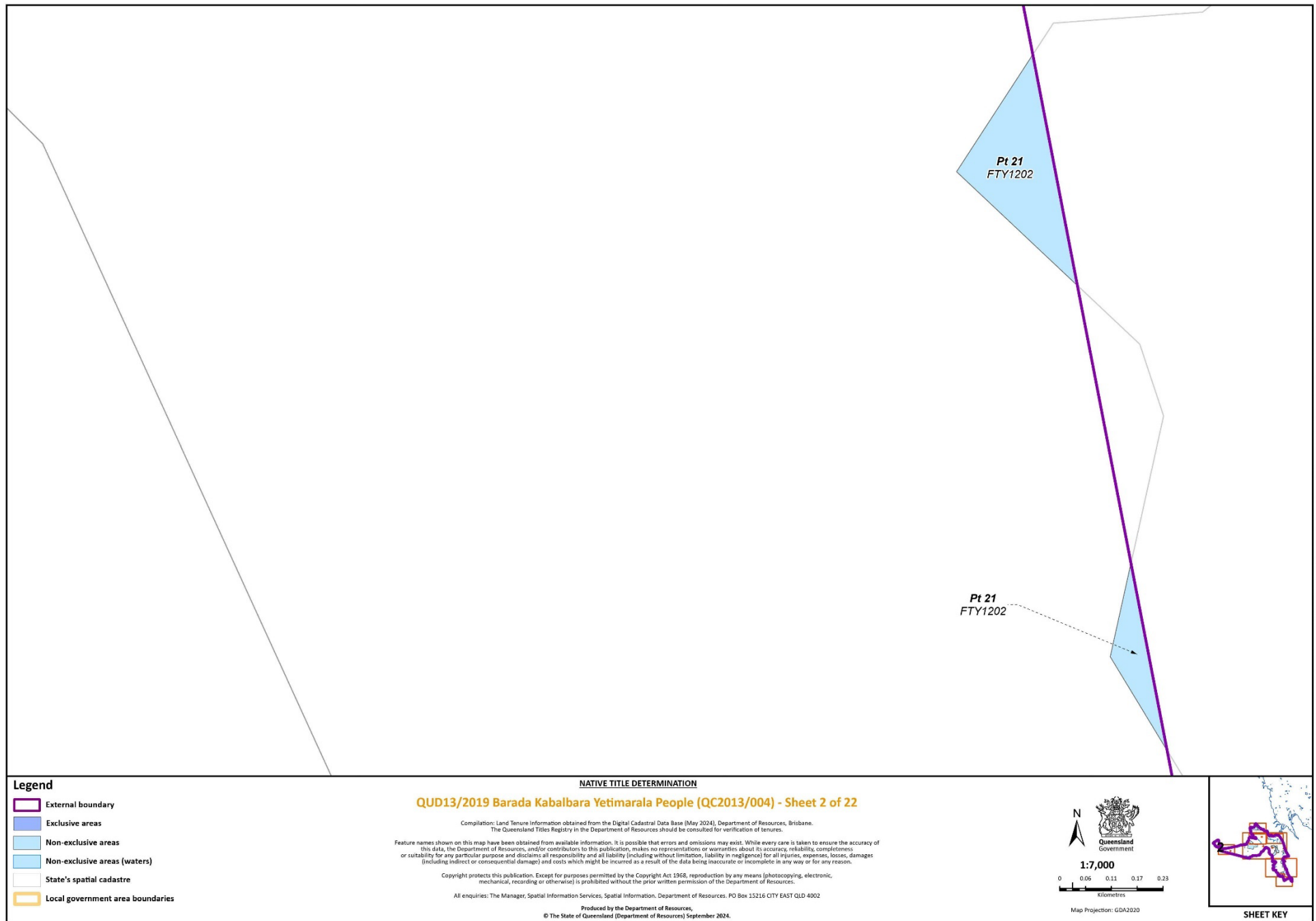


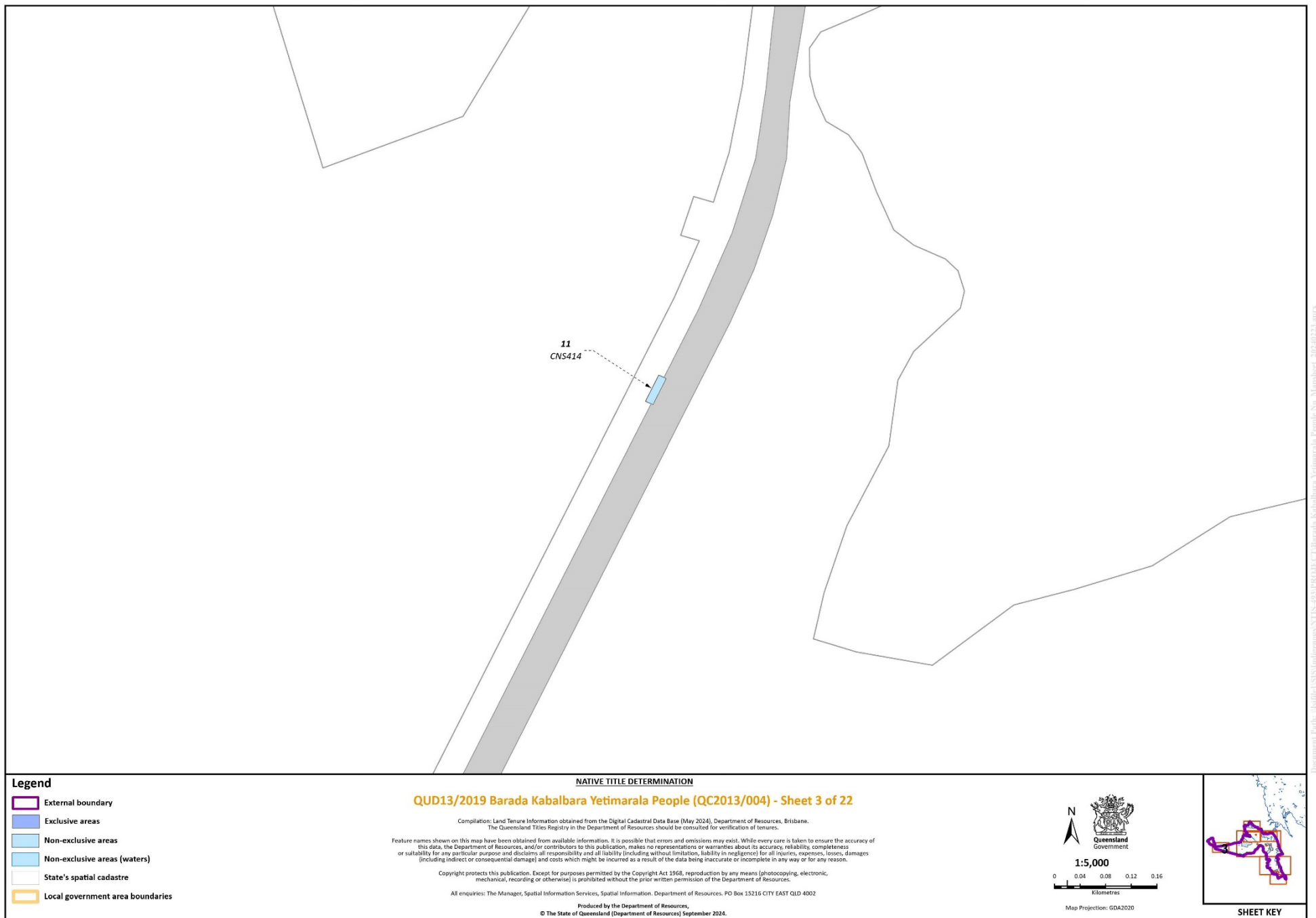
Schedule 6 – Map of Determination Area

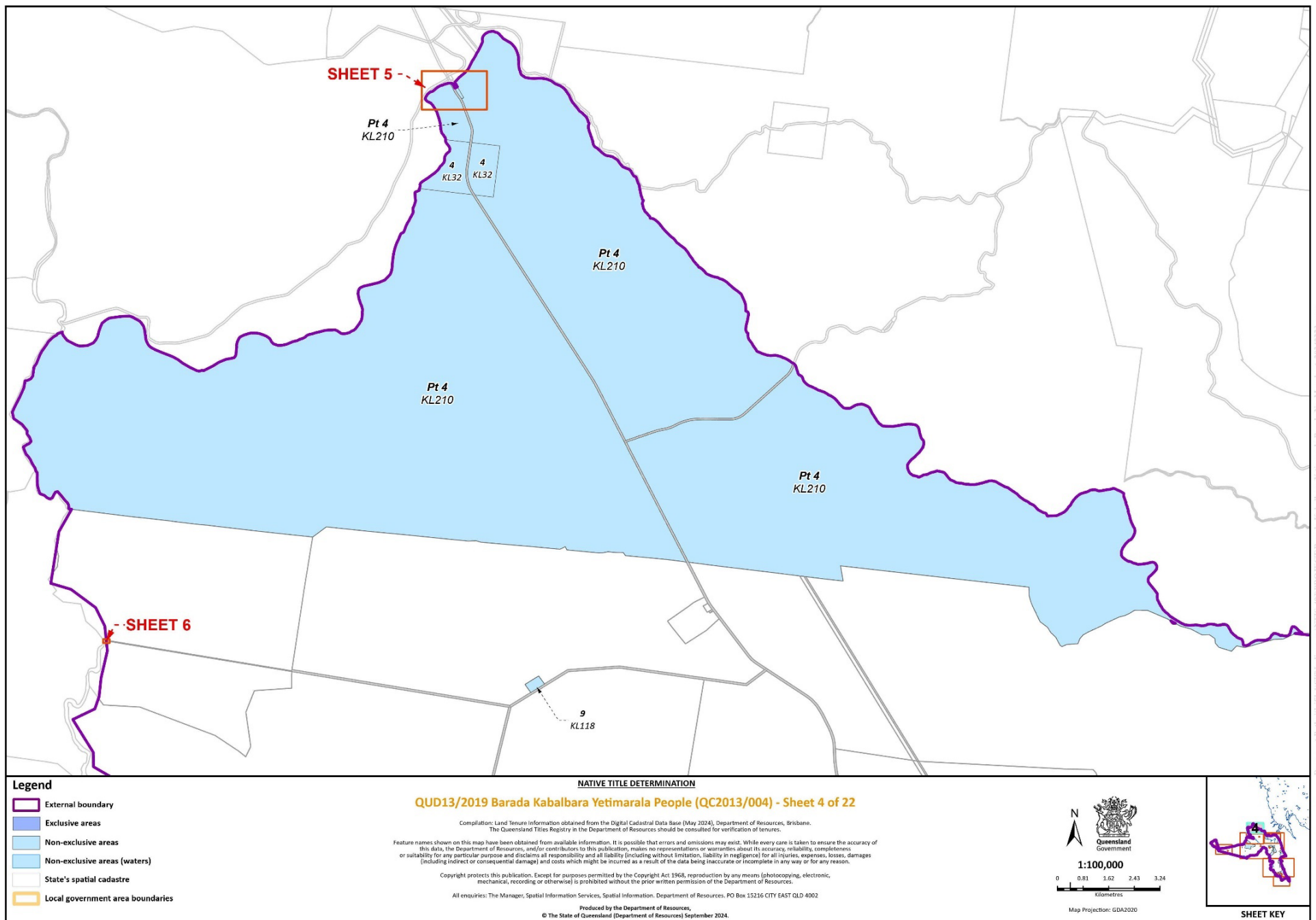


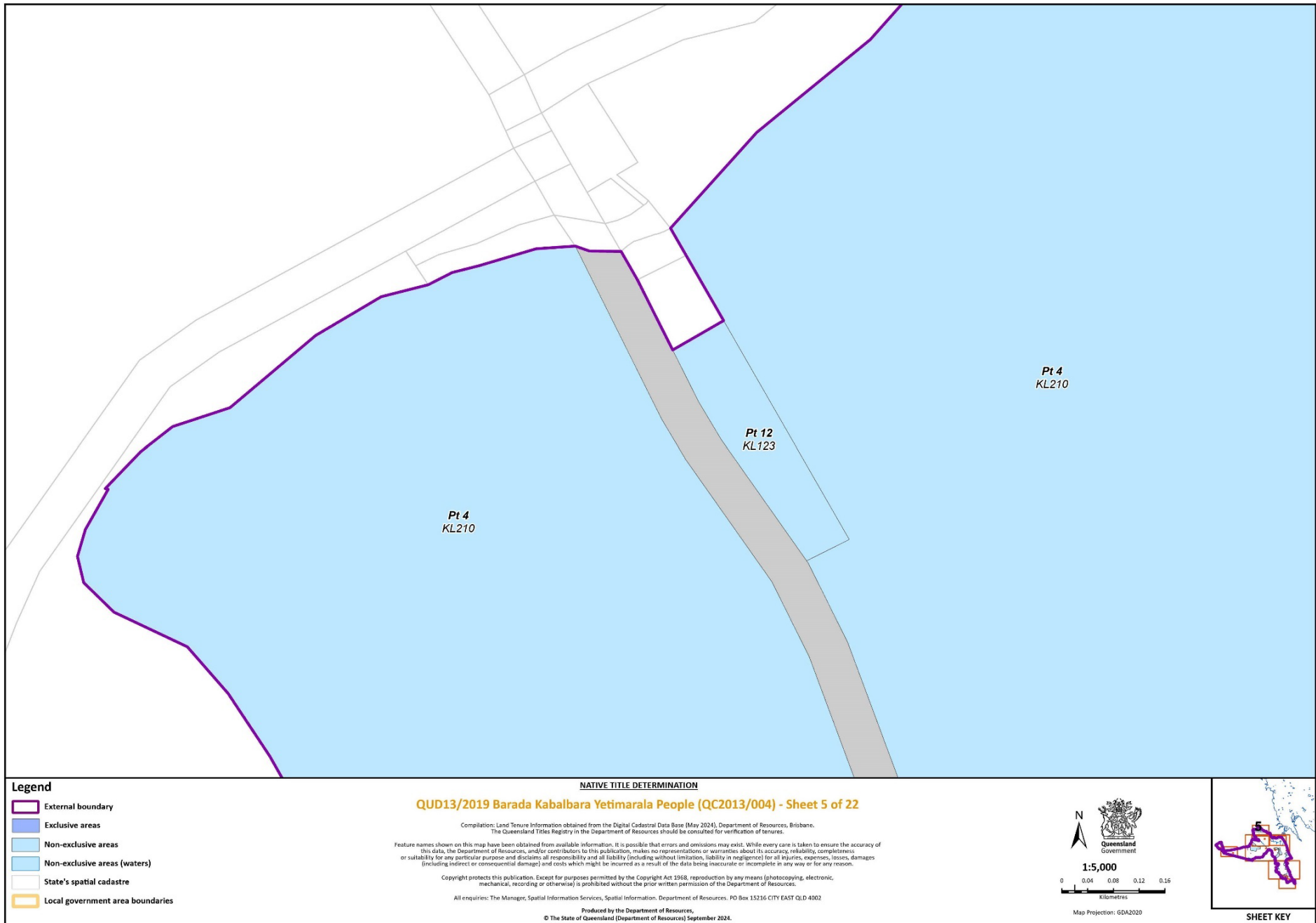


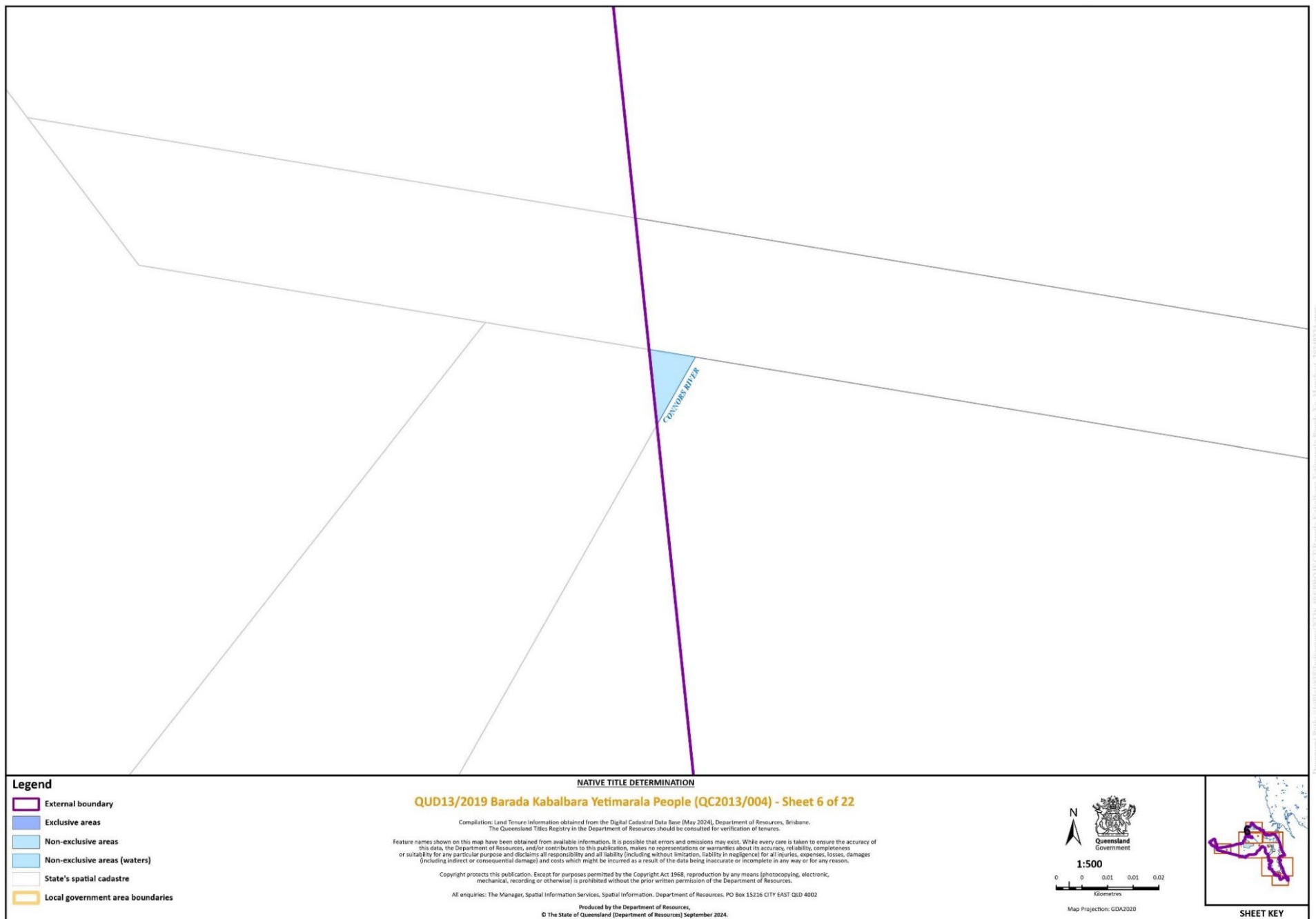


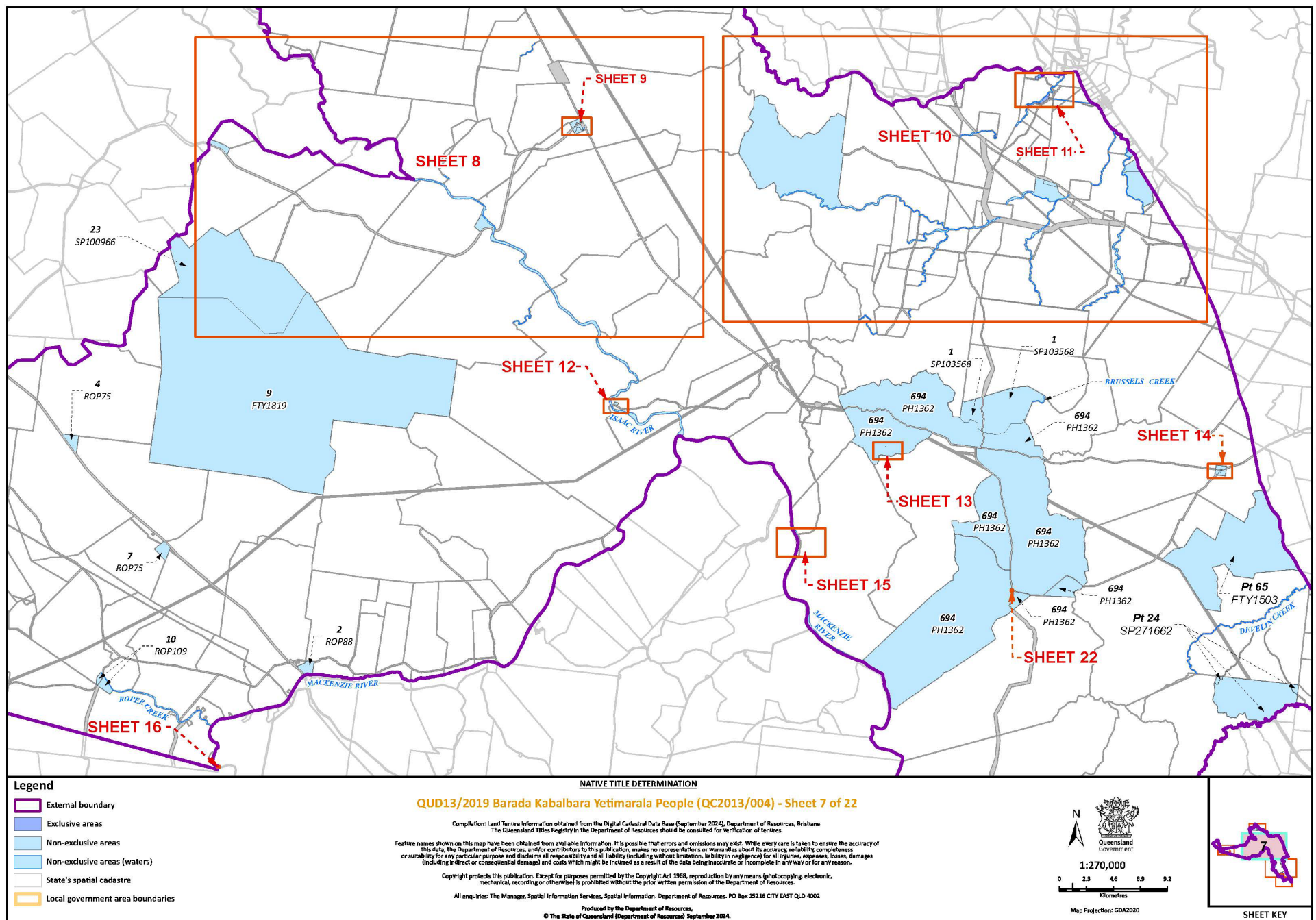
Document Path: \\state\GIS\Indigenous\NTIS-403\PROJECT\Barada Kabalbara Yetimarala People No. Mapsheet_20240223.aprx

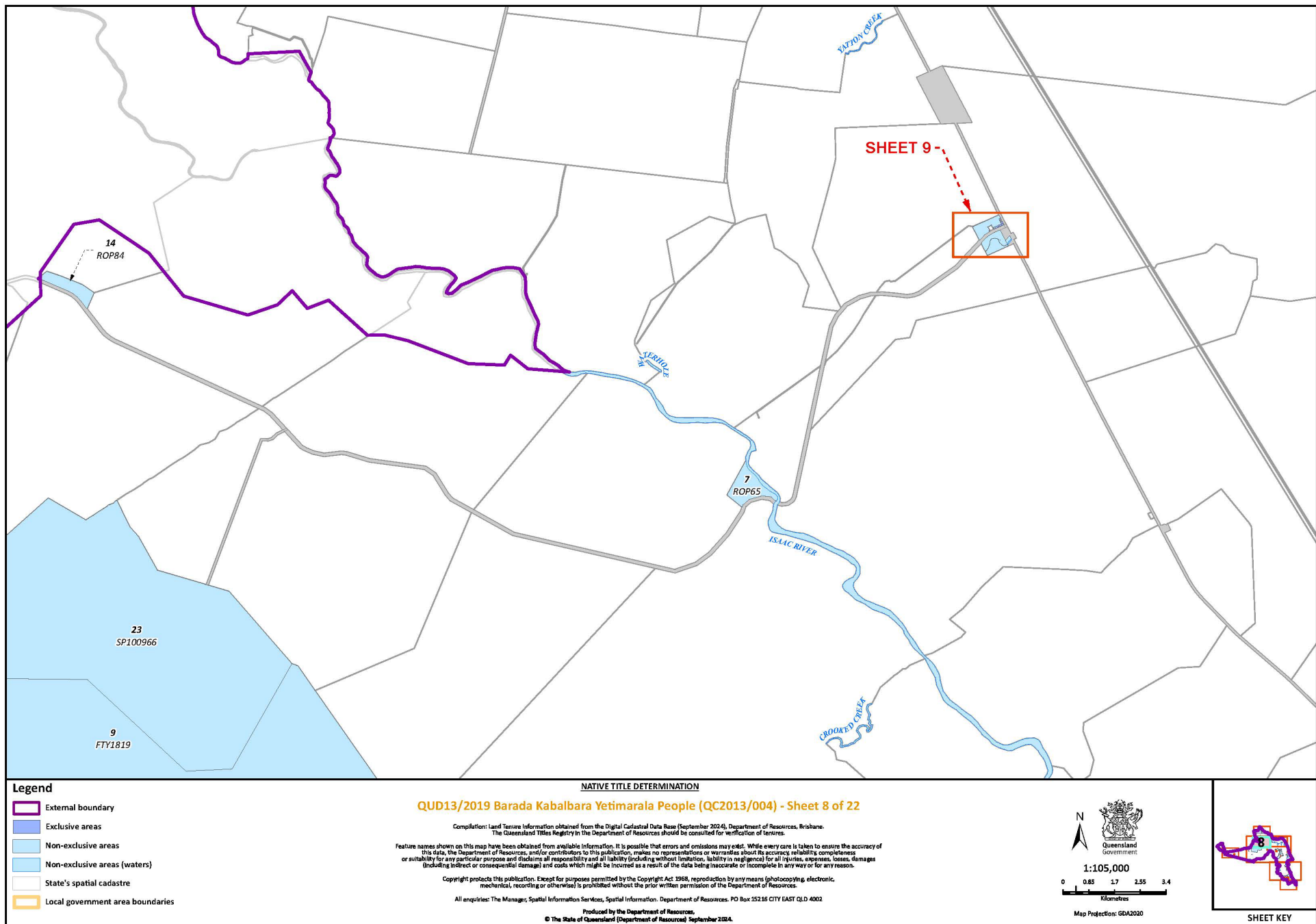


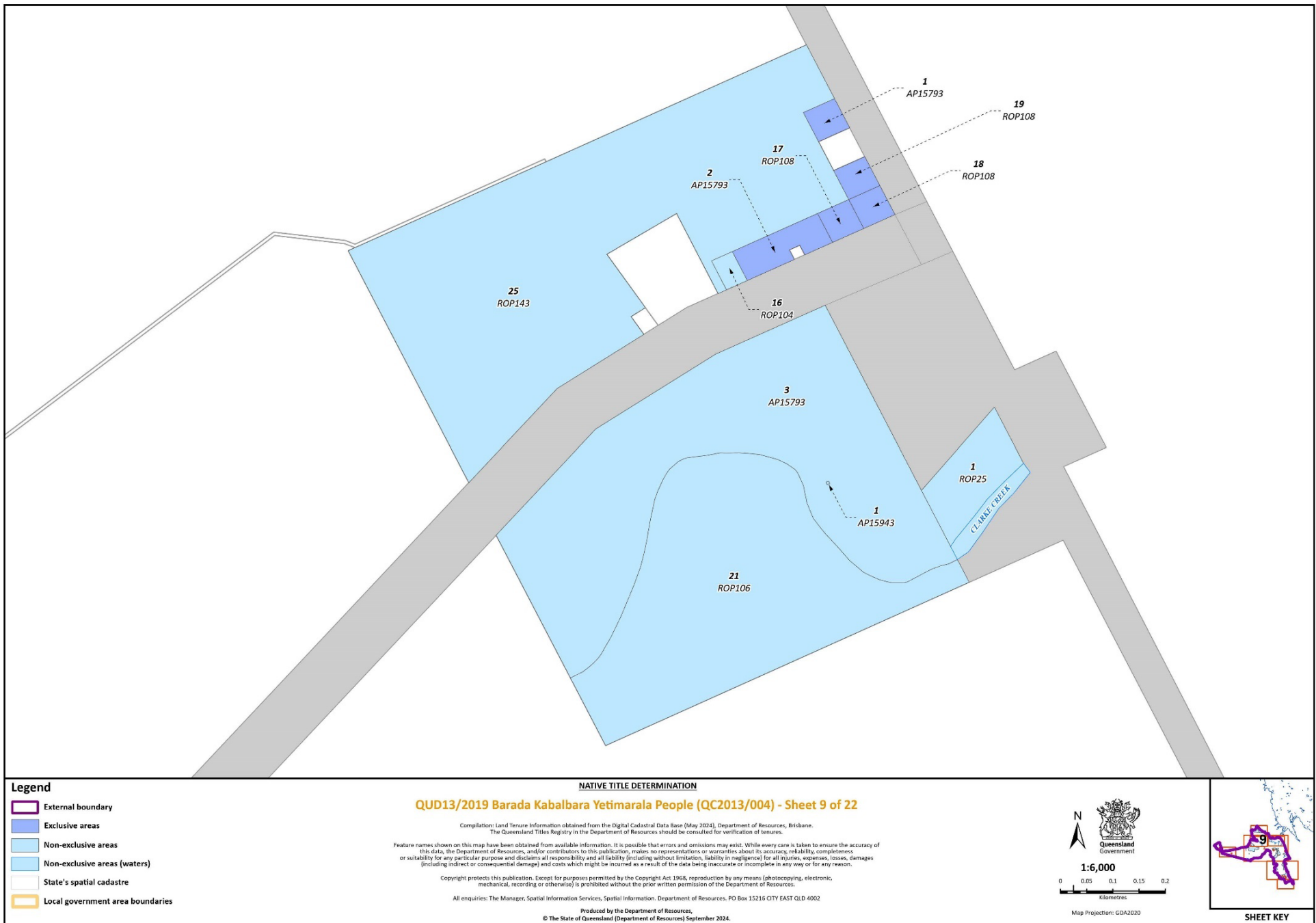














Document Path: \\shelley.ccsn.qld.gov.au\GIS\405\PROJECTS\Tribal\Barada Yetimarala People No. MapSheet_20240223.aprx

Legend

- External boundary
- Exclusive areas
- Non-exclusive areas
- Non-exclusive areas (waters)
- State's spatial cadastre
- Local government area boundaries

NATIVE TITLE DETERMINATION

QUD13/2019 Barada Kabalbara Yetimarala People (QC2013/004) - Sheet 11 of 22

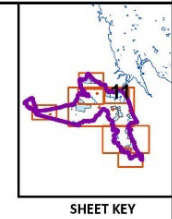
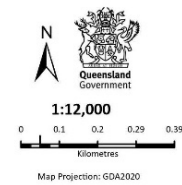
Compilation: Land Tenure information obtained from the Digital Cadastral Data Base (May 2024), Department of Resources, Brisbane.
The Queensland Titles Registry in the Department of Resources should be consulted for verification of tenures.

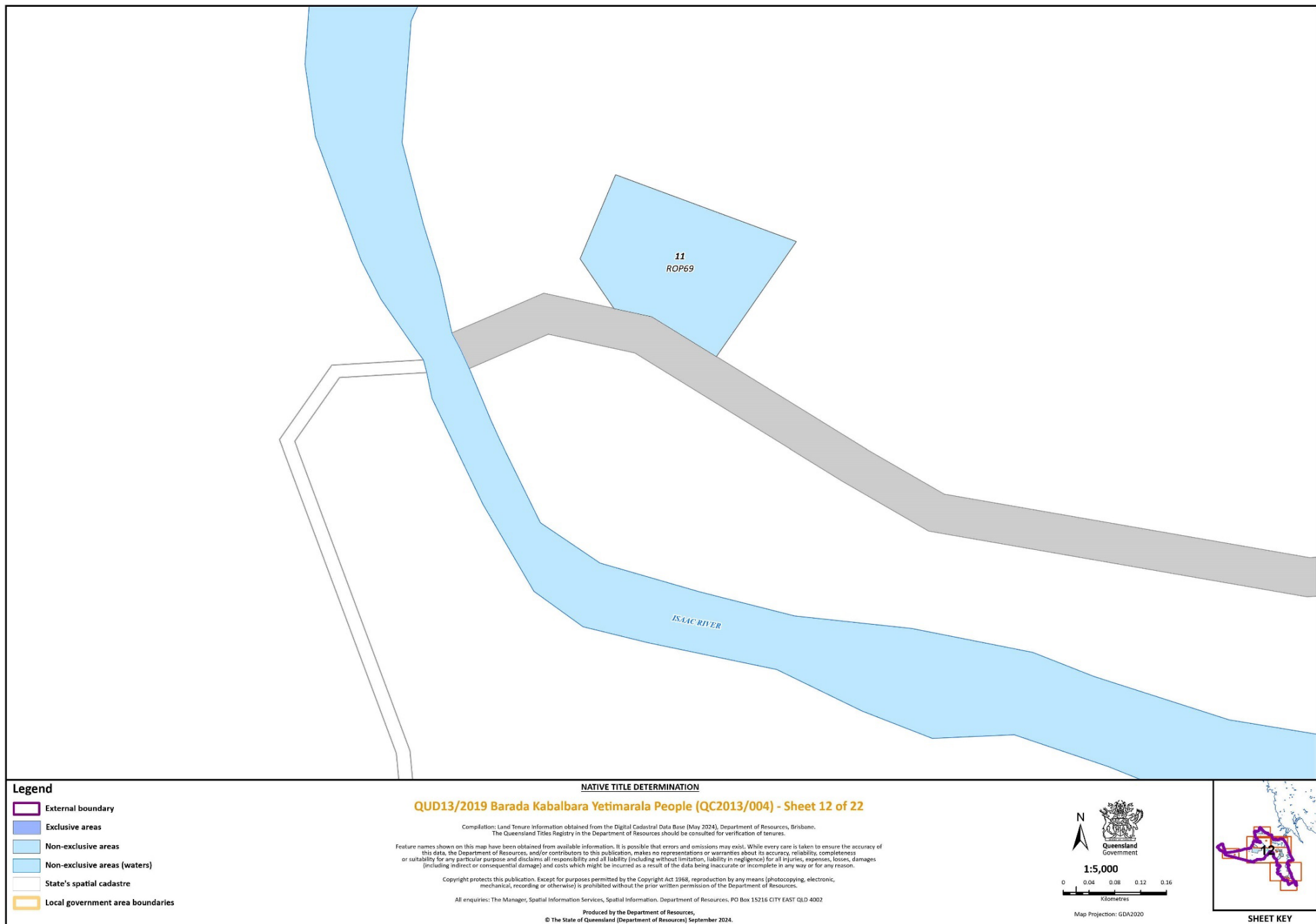
Feature names shown on this map have been obtained from available information. It is possible that errors and omissions may exist. While every care is taken to ensure the accuracy of this data, the Department of Resources, and/or contributors to this publication, makes no representations or warranties about its accuracy, reliability, completeness or suitability for any particular purpose and disclaims all responsibility and all liability (including without limitation, liability in negligence) for all injuries, expenses, losses, damages (including indirect or consequential damage) and costs which might be incurred as a result of the data being inaccurate or incomplete in any way or for any reason.

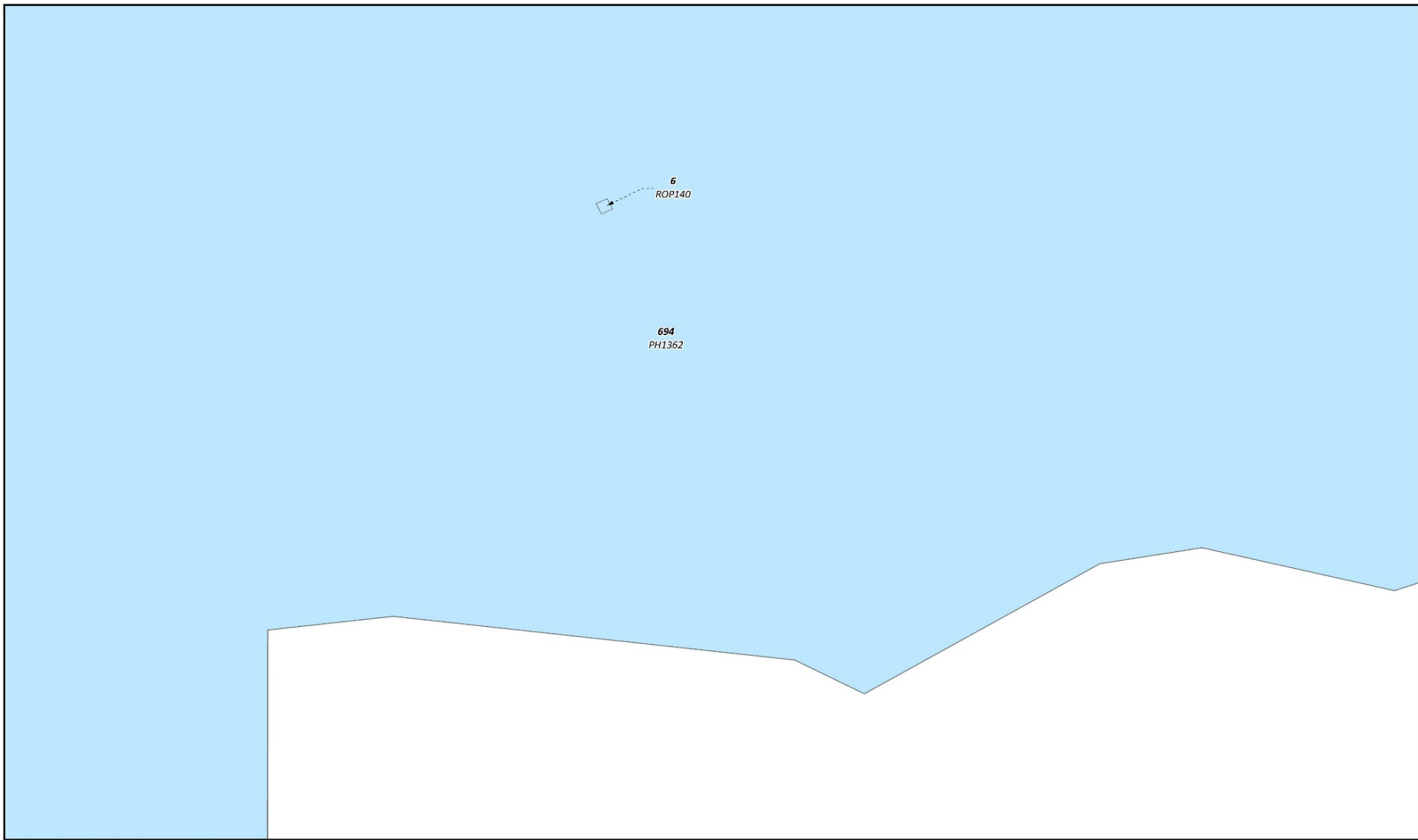
Copyright protects this publication. Except for purposes permitted by the Copyright Act 1968, reproduction by any means (photocopying, electronic, mechanical, recording or otherwise) is prohibited without the prior written permission of the Department of Resources.

All enquiries: The Manager, Spatial Information Services, Spatial Information, Department of Resources, PO Box 15216 CITY EAST QLD 4002

Produced by the Department of Resources,
© The State of Queensland (Department of Resources) September 2024.







Document Path: \\deltaelta\GIS\Indigenous\NTS-4231\RC04\X - Uluarala Kabalbara Yetimarala People\Nt_Maps\nt_20240223.aprx

Legend

- External boundary
- Exclusive areas
- Non-exclusive areas
- Non-exclusive areas (waters)
- State's spatial cadastre
- Local government area boundaries

NATIVE TITLE DETERMINATION

QUD13/2019 Barada Kabalbara Yetimarala People (QC2013/004) - Sheet 13 of 22

Compilation: Land tenure information obtained from the Digital Cadastral Data Base (May 2024), Department of Resources, Brisbane.
The Queensland Titles Registry in the Department of Resources should be consulted for verification of tenures.

Feature names shown on this map have been obtained from available information. It is possible that errors and omissions may exist. While every care is taken to ensure the accuracy of this data, the Department of Resources, and/or contributors to this publication, makes no representations or warranties about its accuracy, reliability, completeness or suitability for any particular purpose and disclaims all responsibility and all liability (including without limitation, liability in negligence) for all injuries, expenses, losses, damages (including indirect or consequential damages) and costs which might be incurred as a result of the data being inaccurate or incomplete in any way or for any reason.

Copyright protects this publication. Except for purposes permitted by the Copyright Act 1968, reproduction by any means (photocopying, electronic, mechanical, recording or otherwise) is prohibited without the prior written permission of The Department of Resources.

All enquiries: The Manager, Spatial Information Services, Department of Resources, PO Box 15216 CITY EAST QLD 4002

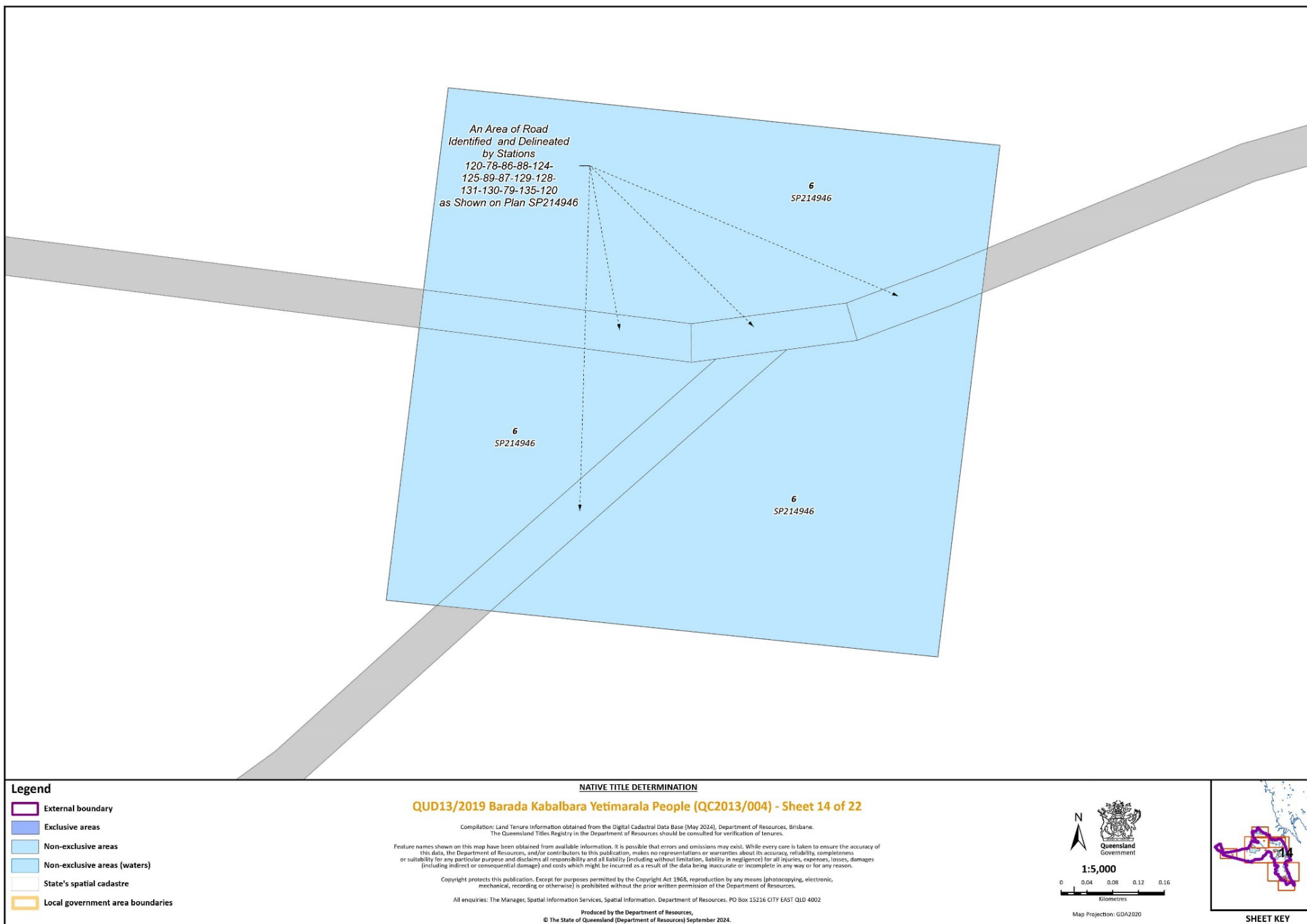
Produced by the Department of Resources,
© The State of Queensland (Department of Resources) September 2024.

1:6,000

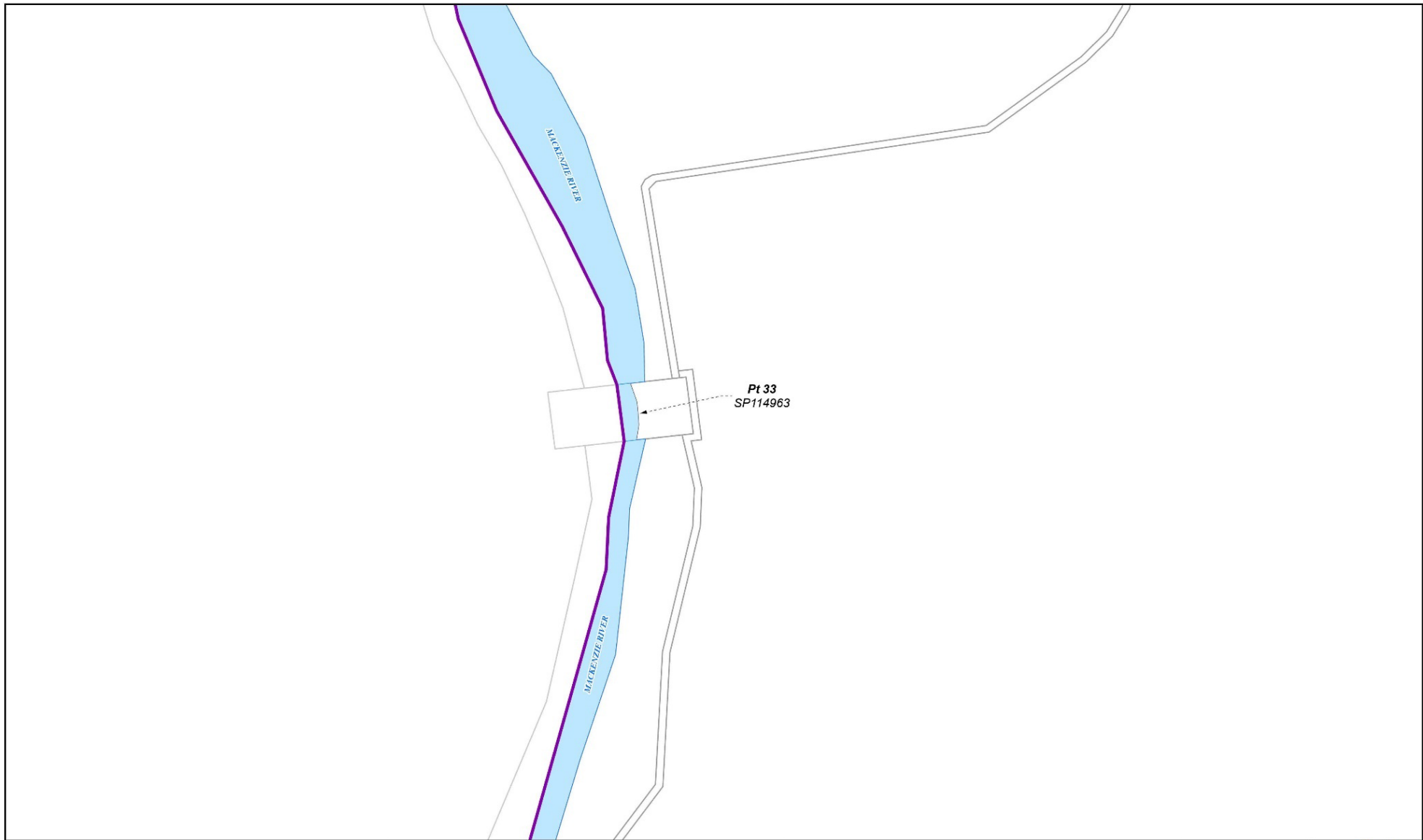
0 0.05 0.1 0.15 0.2
Kilometres

Map Projection: GDA2020

SHEET KEY



Document Path: \\dell01\GIS\Indigenous\NTIS-401\PROJECT\Barada Kabalbara Yetimarala People No. Mapsheet_20240224.aprx



Document Path: \\stafffile1\GIS\Indigenous\NTIS-403\PROJECT\Ubarada Kabalbara Yetimarala People No. Mapsheet_20240223.aprx

Legend

- External boundary
- Exclusive areas
- Non-exclusive areas
- Non-exclusive areas (waters)
- State's spatial cadastre
- Local government area boundaries

NATIVE TITLE DETERMINATION

QUD13/2019 Barada Kabalbara Yetimarala People (QC2013/004) - Sheet 15 of 22

Compilation: Land Tenure Information obtained from the Digital Cadastral Data Base (May 2024), Department of Resources, Brisbane.
The Queensland Titles Registry in the Department of Resources should be consulted for verification of tenures.

Feature names shown on this map have been obtained from available information. It is possible that errors and omissions may exist. While every care is taken to ensure the accuracy of this data, the Department of Resources, and/or contributors to this publication, makes no representations or warranties about its accuracy, reliability, completeness or suitability for any particular purpose and disclaims all responsibility and all liability (including without limitation, liability in negligence) for all injuries, expenses, losses, damages (including indirect or consequential damage) and costs which might be incurred as a result of the data being inaccurate or incomplete in any way or for any reason.

Copyright protects this publication. Except for purposes permitted by the Copyright Act 1968, reproduction by any means (photocopying, electronic, mechanical, recording or otherwise) is prohibited without the prior written permission of the Department of Resources.

All enquiries: The Manager, Spatial Information Services, Spatial Information, Department of Resources, PO Box 15216 CITY EAST QLD 4002

Produced by the Department of Resources,
© The State of Queensland (Department of Resources) September 2024.

Scale and Orientation

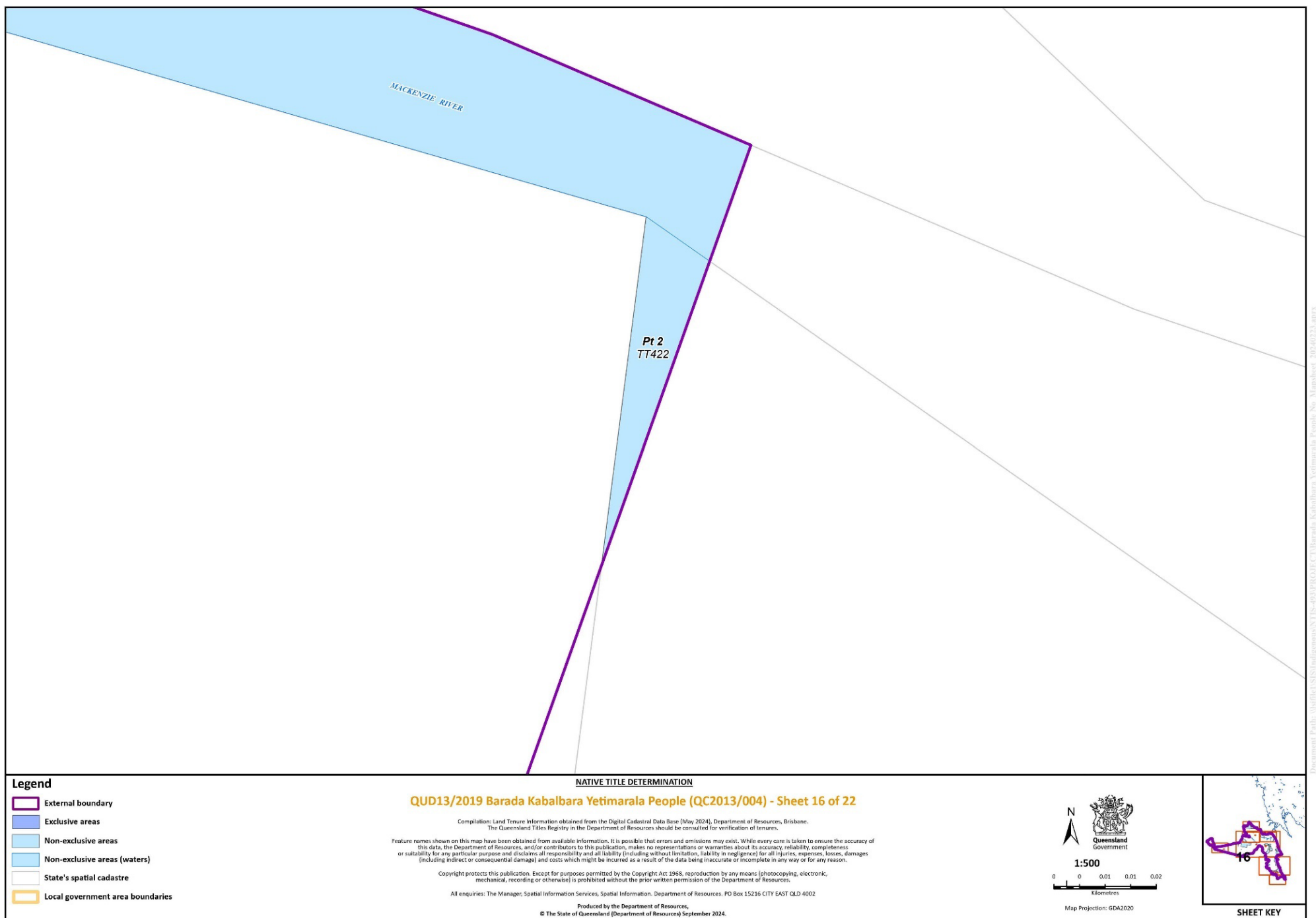
N

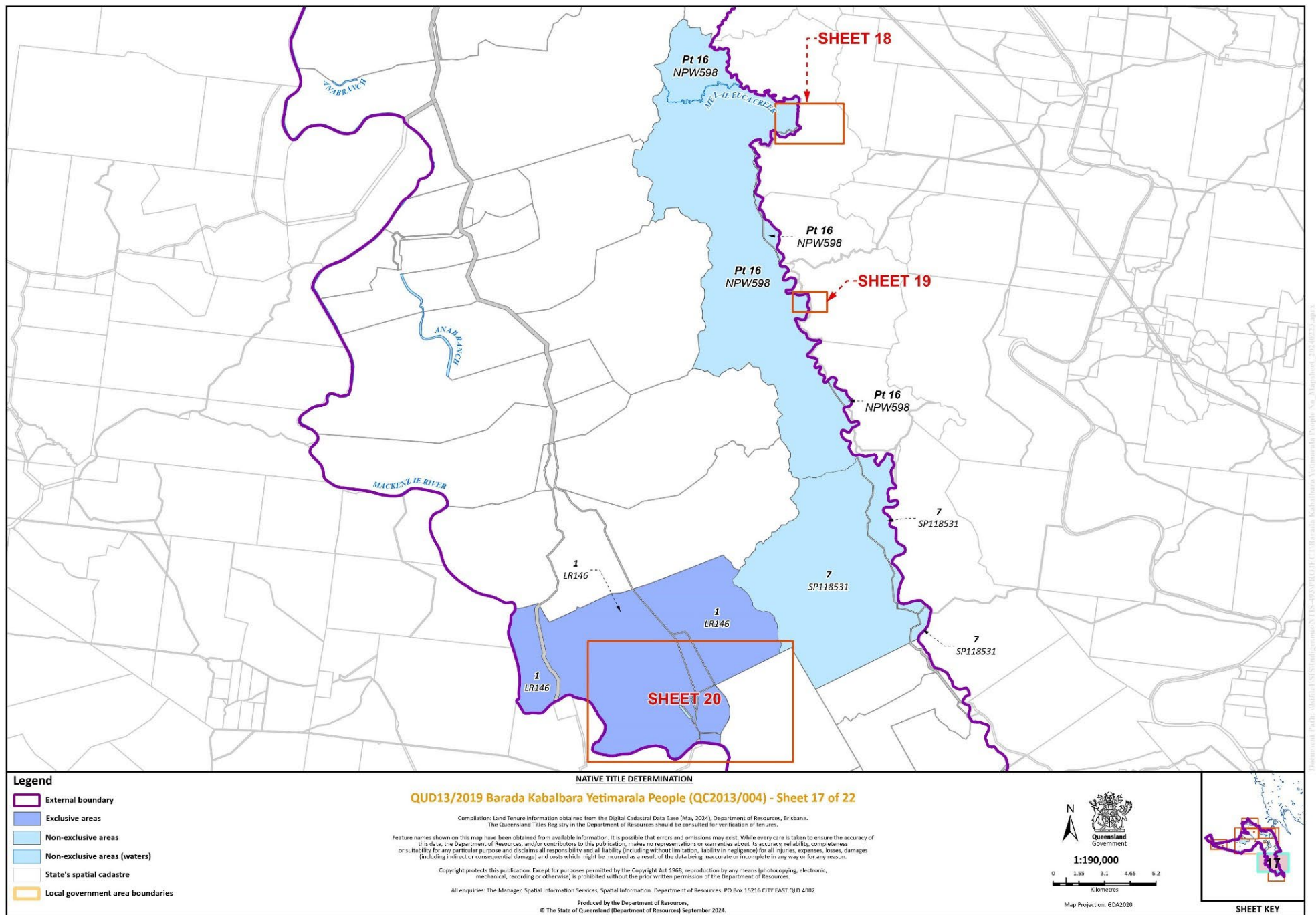
1:10,000

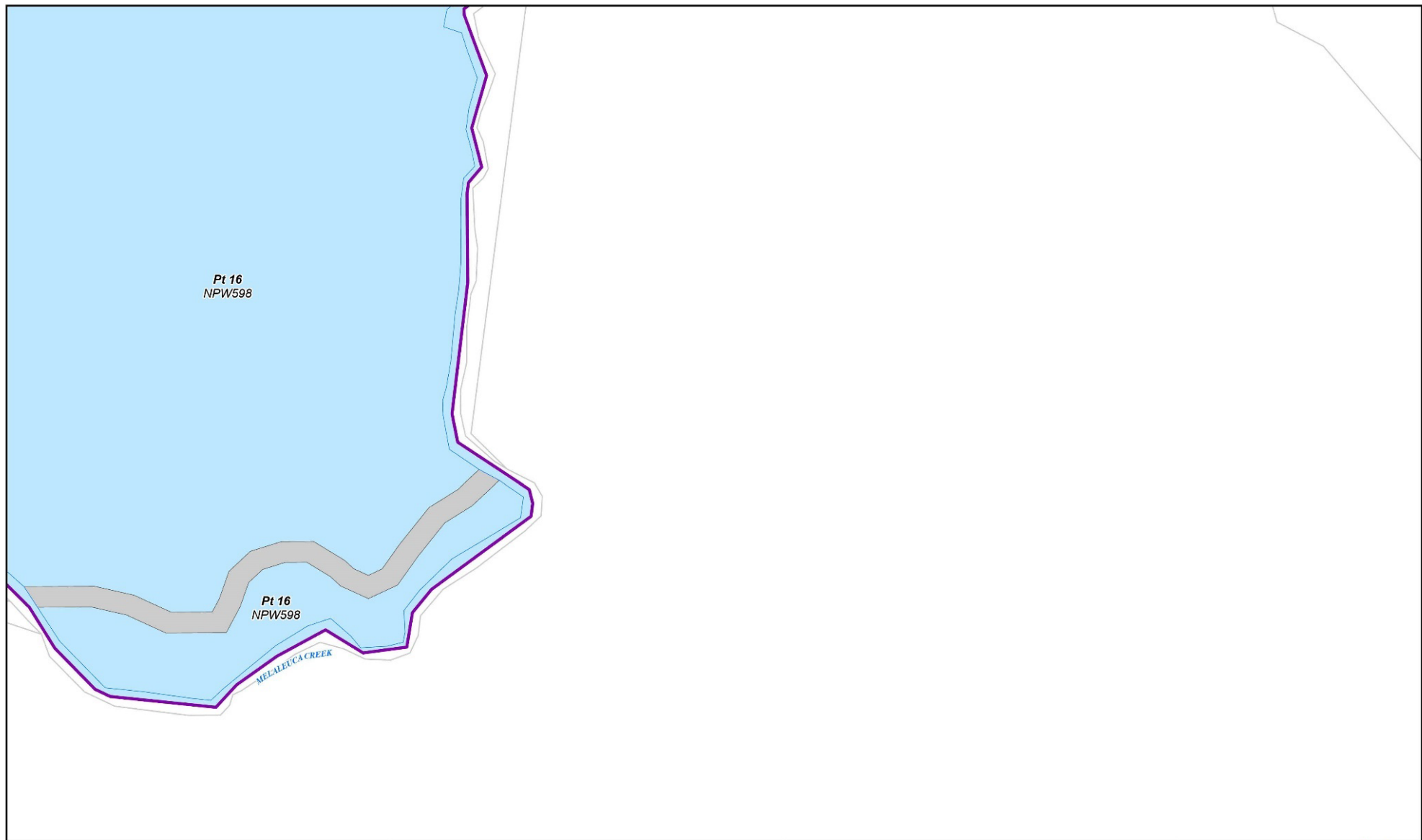
0 0.08 0.16 0.24 0.32
Kilometres

Map Projection: GDA2020

SHEET KEY







Legend

- External boundary
- Exclusive areas
- Non-exclusive areas
- Non-exclusive areas (waters)
- State's spatial cadastre
- Local government area boundaries

NATIVE TITLE DETERMINATION

QUD13/2019 Barada Kabalbara Yetimarala People (QC2013/004) - Sheet 18 of 22

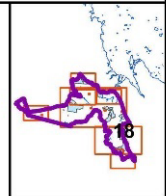
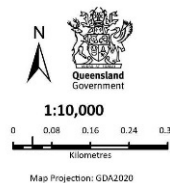
Compilation: Land Tenure Information obtained from the Digital Cadastral Data Base (May 2024), Department of Resources, Brisbane.
The Queensland Titles Registry in the Department of Resources should be consulted for verification of tenures.

Feature names shown on this map have been obtained from available information. It is possible that errors and omissions may exist. While every care is taken to ensure the accuracy of this data, the Department of Resources, and/or contributors to this publication, makes no representations or warranties about its accuracy, reliability, completeness or suitability for any particular purpose and disclaims all responsibility and all liability (including without limitation, liability in negligence) for all injuries, expenses, losses, damages (including indirect or consequential damage) and costs which might be incurred as a result of the data being inaccurate or incomplete in any way or for any reason.

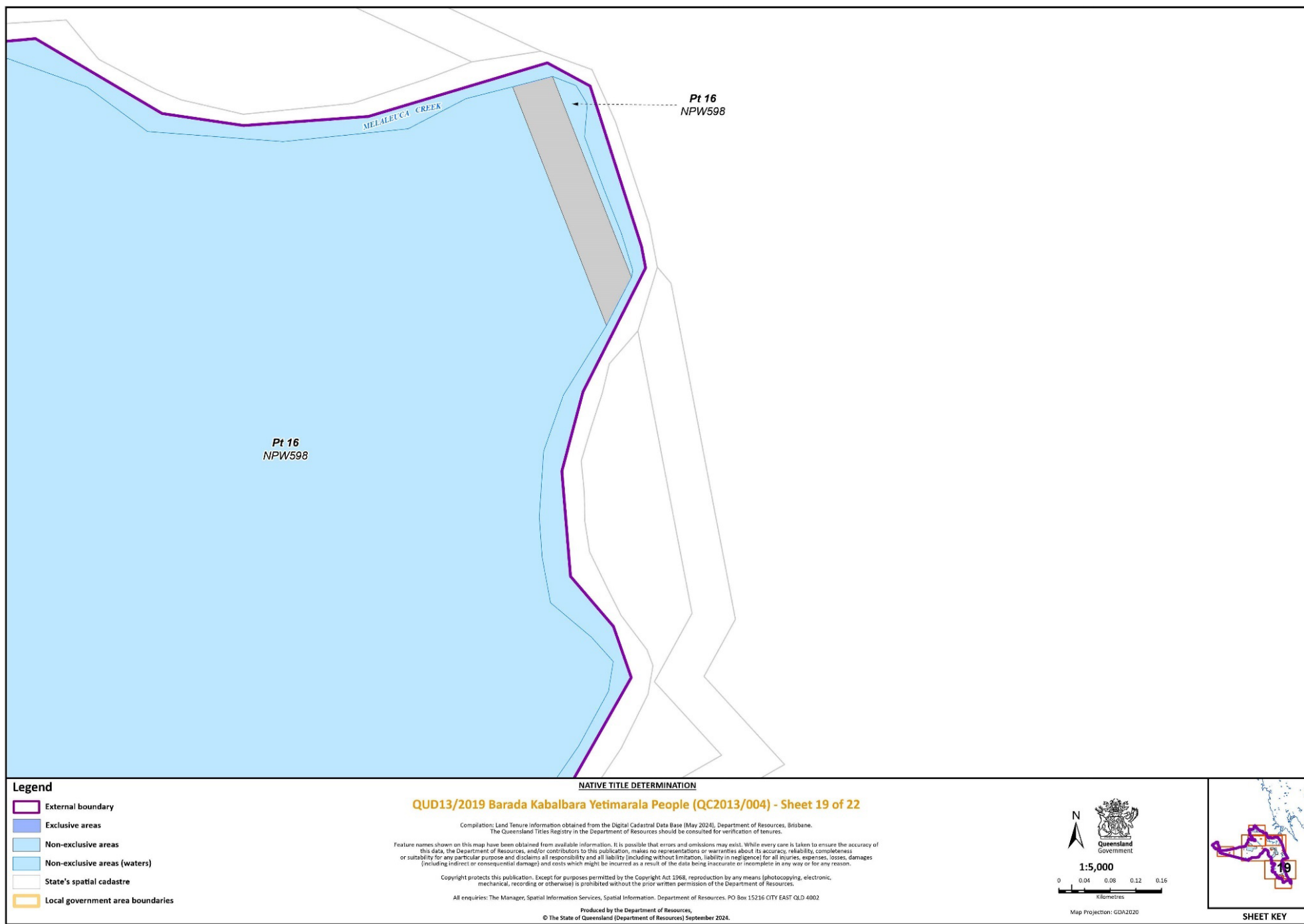
Copyright protects this publication. Except for purposes permitted by the Copyright Act 1968, reproduction by any means (photocopying, electronic, mechanical, recording or otherwise) is prohibited without the prior written permission of the Department of Resources.

All enquiries: The Manager, Spatial Information Services, Spatial Information, Department of Resources, PO Box 15216 CITY EAST QLD 4002

Produced by the Department of Resources,
© The State of Queensland (Department of Resources) September 2024.



SHEET KEY



Document Path: \\staff01\GIS\Indigenous\NTIS-403\PROJECT\Barada Kabalbara Yetimarala People No. Mapsheet_20240223.aprx



Legend

- External boundary
- Exclusive areas
- Non-exclusive areas
- Non-exclusive areas (waters)
- State's spatial cadastre
- Local government area boundaries

NATIVE TITLE DETERMINATION

QUD13/2019 Barada Kabalbara Yetimarala People (QC2013/004) - Sheet 20 of 22

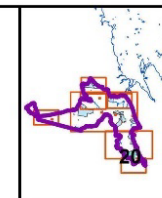
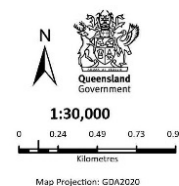
Compilation: Land Tenure Information obtained from the Digital Cadastral Data Base (May 2024), Department of Resources, Brisbane.
The Queensland Titles Registry in the Department of Resources should be consulted for verification of tenures.

Feature names shown on this map have been obtained from available information. It is possible that errors and omissions may exist. While every care is taken to ensure the accuracy of this data, the Department of Resources, and/or contributors to this publication, makes no representations or warranties about its accuracy, reliability, completeness or suitability for any particular purpose and disclaims all responsibility and all liability (including without limitation, liability in negligence) for all injuries, expenses, losses, damages (including indirect or consequential damage) and costs which might be incurred as a result of the data being inaccurate or incomplete in any way or for any reason.

Copyright protects this publication. Except for purposes permitted by the Copyright Act 1968, reproduction by any means (photocopying, electronic, mechanical, recording or otherwise) is prohibited without the prior written permission of the Department of Resources.

All enquiries: The Manager, Spatial Information Services, Spatial Information, Department of Resources, PO Box 15216 CITY EAST QLD 4002

Produced by the Department of Resources,
© The State of Queensland (Department of Resources) September 2024.



SHEET KEY

